

Team: Southern

NO.	NAME	TOTAL FG		3-POINT		FT	FTA	REB			PF	TP	A	TO	BLK	S	MIN	
		FG	FGA	FG	FGA			O	D	T								
24	Harrison, Lisa	6	14	0	0	6	6	3	2	5	4	18	0	2	0	2	27	
50	Collins, Cindy	4	10	0	0	0	0	3	6	9	2	8	0	3	0	0	28	
55	Moore, Mioshi	2	9	0	0	1	2	1	5	6	2	5	2	0	0	1	28	
21	Woods, Tina	2	6	0	0	4	5	3	1	4	0	8	3	1	0	4	28	
04	Burden, Michelle	1	2	0	1	4	5	0	0	0	1	6	1	2	0	0	28	
34	Grant, Steph.	1	2	0	0	0	1	0	1	1	0	2	1	1	0	2	13	
05	Andres, Kim	0	1	0	1	0	0	0	0	0	0	0	0	0	0	0	3	
10	Davis, Debbie	0	0	0	0	0	0	0	0	0	0	0	0	0	0	0	1	
12	Burden, Danielle	0	0	0	0	0	0	0	0	0	0	0	0	0	0	0	1	
15	Burden, Melissa	0	0	0	0	0	0	0	0	0	0	0	0	0	0	0	1	
23	Hoffman, Julie	0	0	0	0	0	0	0	0	0	0	0	0	0	0	0	1	
35	Kiggins, Pam	0	0	0	0	0	0	0	0	0	0	0	0	0	0	0	1	
TEAM																		
TOTALS		16	44	0	2	15	19	11	15	26	9	47	7	9	0	9	160	

Percentages: Game----- FG 16/ 44 36.4% 3-PT. 0/ 2 0.0% FT 15/ 19 78.9%

Period 1 6/ 13 46.2% 0/ 0 0.0% 5/ 6 83.3%

Period 2 1/ 8 12.5% 0/ 2 0.0% 3/ 4 75.0%

Period 3 6/ 15 40.0% 0/ 0 0.0% 2/ 2 100.0%

Period 4 3/ 8 37.5% 0/ 0 0.0% 5/ 7 71.4%

Team: Marshall County

NO.	NAME	TOTAL FG		3-POINT		FT	FTA	REB			PF	TP	A	TO	BLK	S	MIN	
		FG	FGA	FG	FGA			O	D	T								
23	Cadwell, Rach.	0	6	0	0	2	2	2	6	8	2	2	1	2	0	1	25	
40	Swift, Darlene	0	4	0	0	0	0	4	7	11	3	0	1	1	0	0	28	
31	Gossum, S.	10	15	0	0	1	1	3	3	6	2	21	0	2	0	0	29	
22	Sells, Alicia	1	3	0	0	1	2	0	0	0	4	3	4	7	0	1	28	
24	Johnston, Jenny	0	3	0	0	0	0	0	0	0	3	0	3	2	0	0	24	
44	Walker, Kristi	4	10	0	0	1	2	1	3	4	1	9	0	4	0	0	21	
30	Watkins, Tammy	0	0	0	0	0	0	0	0	0	0	0	0	0	0	0	1	
14	Morgan, Holly	0	0	0	0	0	0	0	1	1	0	0	1	0	0	0	1	
21	Brien, Jenny	1	1	0	0	0	0	0	0	0	0	2	0	0	0	0	1	
32	Oliver, Kim	0	0	0	0	0	0	0	0	0	0	0	0	0	0	0	1	
33	Greenfield, L.	0	0	0	0	0	0	0	0	0	0	0	0	0	0	0	1	
TEAM																		
TOTALS		16	42	0	0	5	7	11	20	31	15	37	10	18	0	2	160	

Percentages: Game----- FG 16/ 42 38.1% 3-PT. 0/ 0 0.0% FT 5/ 7 71.4%

Period 1 6/ 15 40.0% 0/ 0 0.0% 1/ 1 100.0%

Period 2 1/ 10 10.0% 0/ 0 0.0% 3/ 4 75.0%

Period 3 4/ 8 50.0% 0/ 0 0.0% 1/ 2 50.0%

Period 4 5/ 9 55.6% 0/ 0 0.0% 0/ 0 0.0%

OFFICIALS: Jackie Cupp, Lois Holmes, Alt.-D. Percell

Technical: None

SCORE BY PERIODS

Southern	17	5	14	11	=	47
Marshall County	13	5	9	10	=	37

Southern "Lady Trojans" vs Marshall County "Lady Marshals"
2nd Half Play by Play

PAGE : 1

Tip off at 9:00 p.m. on 03/23/88 at State Tourney, Frankfort
Produced by the K.H.S.A.A. Stat Crew with FINAL III™

Player	Team	Marshall County
Cadwell, Rach.	Swift, Darlene	Gossum, S., Sells, Alicia, Johnston, Jenny
7-12	58.3%	8-26 30.7% 6 ft Lane Jump shot by Gossum, S. Assist by Cadwell, Rach.
1	4	Foul on Sells, Alicia
2	1	
8-13	61.5%	9-27 33.3% 2 ft Lane Bank by Gossum, S. Assist by Johnston, Jenny
2	5	
9-14	64.2%	10-28 35.7% 4 ft Lane Turnaround by Gossum, S. Assist by Sells, Alicia
2	6	
3	2	Player Control Foul on Sells, Alicia
1	3	Foul on Cadwell, Rach. Sub In: Walker, Kristi Out: Johnston, Jenny
10-15	66.6%	11-31 35.4% Sub In: Johnston, Jenny Out: Walker, Kristi 3 ft Lane Bank by Gossum, S.
4	4	Foul on Sells, Alicia Sub In: Walker, Kristi Out: Sells, Alicia
1-2	50.0%	5-7 71.4% Walker, Kristi, 2 Free Throws made 1st missed 2nd

Time	Score	Southern	Player	Team
		Harrison, Lisa, Collins, Cindy, Moore, Mioshi, Woods, Tina, Burden, Michelle Ball to Lady Trojans		
3 7:30	*20-22			
3 7:13				
3 6:51	*22-22			
3 6:31	22-24*	10 ft Left Base Line Turnaround by Harrison, Lisa	3-6	50.0% 8-25 32.0%
3 6:05	*24-24			
3 5:33				
3 5:31	24-26*	16 ft Right Base Line Jump shot by Harrison, Lisa	4-8	50.0% 9-27 33.3%
3 5:10	24-28*	Follow Layup by Harrison, Lisa	5-10	50.0% 10-30 33.3%
3 5:09				
3 5:09				
3 5:09	24-29*	Harrison, Lisa, 1 Free Throw made	5-5	100% 9-11 81.8%
3 4:13		Foul on Harrison, Lisa	4	1
3 3:47	24-31*	Layup Off Fast Break by Collins, Cindy Assist by Woods, Tina	3-8	37.5% 11-32 34.3%
		Sub In: Grant, Steph. Out: Harrison, Lisa	3	4
3 3:23				
3 3:21				
3 2:35	*26-31			
3 2:10	26-33*	6 ft Lane Jump shot by Woods, Tina	1-4	25.0% 12-34 35.2%
3 2:09				
3 2:09				
3 2:09	26-34*	Woods, Tina, 1 Free Throw made	1-1	100% 10-12 83.3%
3 1:50		Foul on Collins, Cindy	1	2
3 1:07		Foul on Collins, Cindy	2	3
3 1:07	*27-34			
3 0:50	27-36*	12 ft Right Side Jump shot by Grant, Steph. Assist by Moore, Mioshi	1-1	100% 13-36 36.1%
			1	5

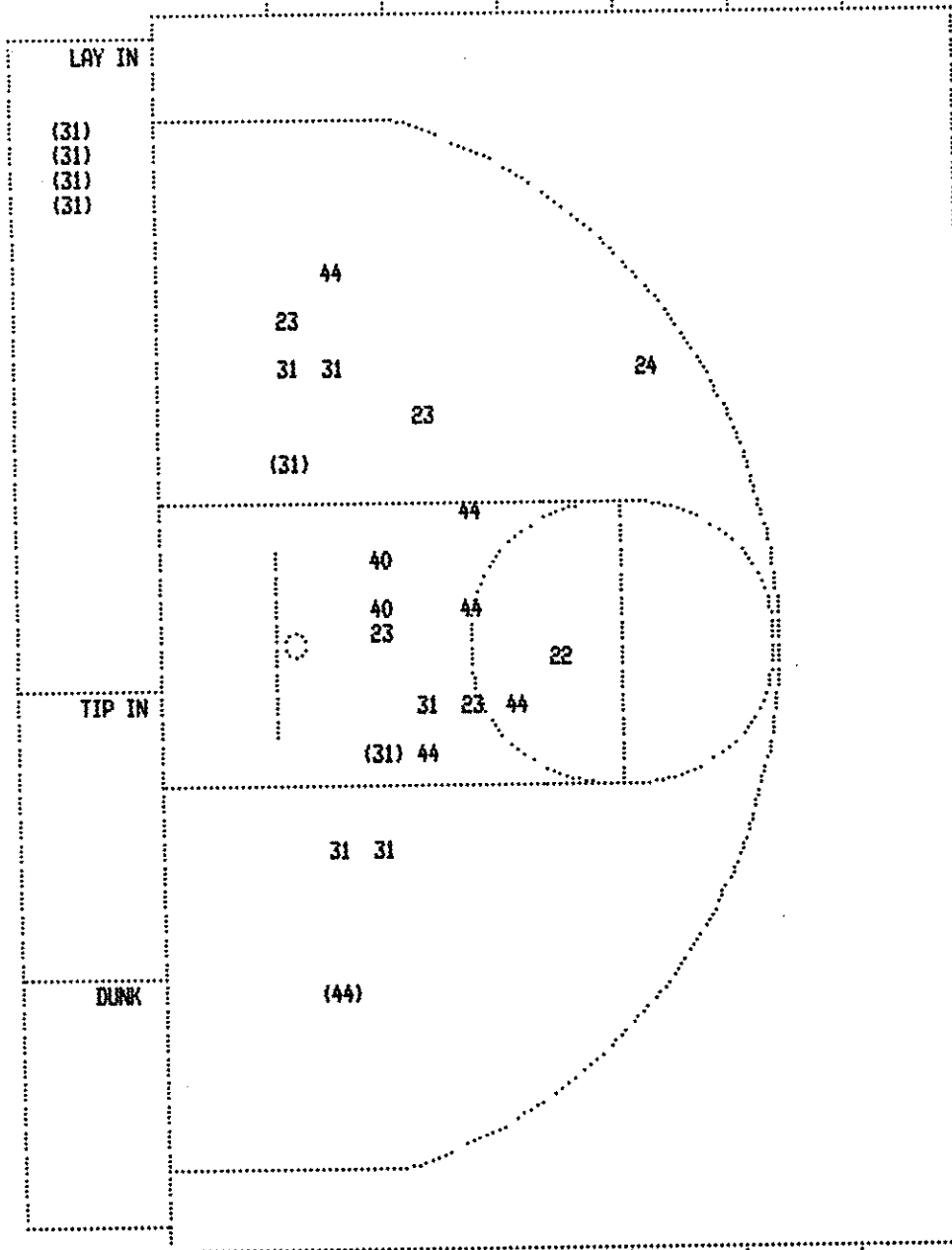
Southern "Lady Trojans" vs Marshall County "Lady Marshals"
2nd Half Play by Play

PAGE : 2

Tip off at 9:00 p.m. on 03/23/88 at State Tourney, Frankfort
Produced by the K.H.S.A.A. Stat Crew with FINAL III™

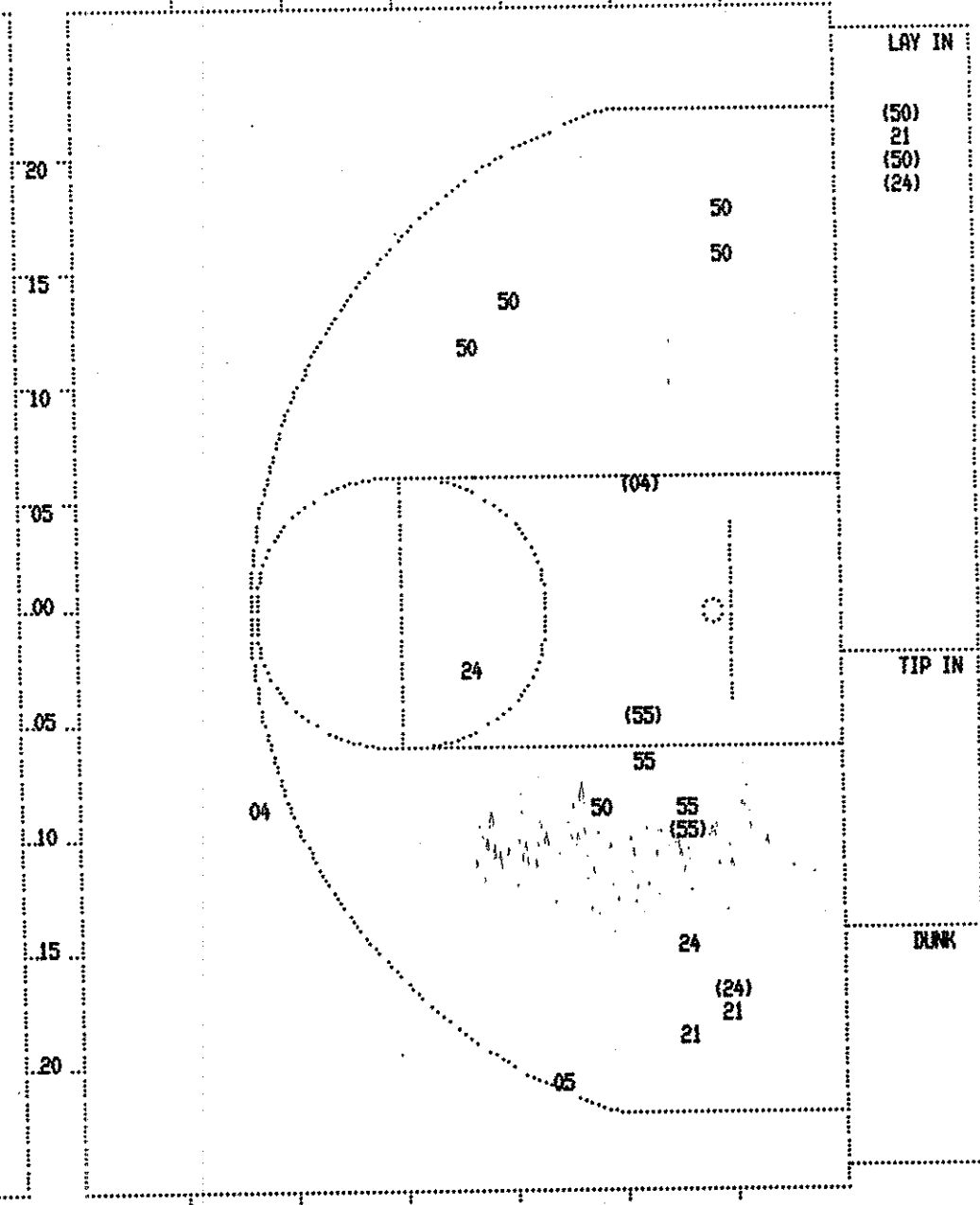
Player	Team	Marshall County
Cadwell, Rach.	Swift, Darlene	Gossum, S., Sells, Alicia, Johnston, Jenny
2	5	Foul on Cadwell, Rach.
1-2	50.0%	12-35 34.2% 12 ft Lane Jump shot by Sells, Alicia Assist by Johnston, Jenny
3	7	Sub In: Walker, Kristi Out: Cadwell, Rach.
2-8	25.0%	13-36 36.1% 15 ft Left Side Jump shot by Walker, Kristi Assist by Sells, Alicia
3	8	
3-9	33.3%	14-38 36.8% Follow Layup by Walker, Kristi Foul on Johnston, Jenny
3	6	
		Sub In: Cadwell, Rach. Out: Johnston, Jenny
		REB: 29 A: 8 BLK: 0 TO: 17 PF: 6 S: 2 FT: 5-7 71.4% FG: 14-38 36.8% No. 1 Marshall County
2	7	Foul on Swift, Darlene
4-10	40.0%	15-40 37.5% 13 ft Left Angle Jump shot by Walker, Kristi Assist by Sells, Alicia
4	9	
3	8	Foul on Swift, Darlene
1-1	100%	16-42 38.0% 13 ft Left Side Jump shot by Brien, Jenny Assist by Morgan, Holly
1	10	

Time	Score	Southern	Player	Team
		Harrison, Lisa, Collins, Cindy, Moore, Mioshi, Woods, Tina, Burden, Michelle Ball to Lady Trojans		
4 6:35		Sub In: Grant, Steph. Out: Harrison, Lisa		
4 6:44	27-38*	Layup Off Fast Break by Woods, Tina Assist by Grant, Steph.	2-5	40.0% 14-38 36.8%
				6
4 5:58				
4 5:58	27-40*	Woods, Tina, 2 Free Throws made both	3-3	100% 12-14 85.7%
4 5:48	*29-40			
4 4:32	31-42*	4 ft Lane Follow by Collins, Cindy	4-10	40.0% 15-41 36.5%
4 4:12	*33-42			
4 3:37				
4 3:36		Sub In: Harrison, Lisa Out: Grant, Steph.		
4 3:36				
		REB: 24 A: 6 BLK: 0 TO: 9 PF: 3 S: 9 FT: 12-14 85.7% FG: 15-41 36.5%		
4 3:36	33-43*	Woods, Tina, 2 Free Throws missed 1st made 2nd	4-5	80.0% 13-16 81.2%
4 3:01	33-45*	8 ft Right Base Line Turnaround by Harrison, Lisa Assist by Moore, Mioshi	6-12	50.0% 16-42 38.0%
			2	7
4 3:01				
4 3:01	33-46*	Harrison, Lisa, 1 Free Throw made	6-6	100% 14-17 82.3%
4 2:47	*35-46			
4 1:25				
4 1:25	35-47*	Burden, Michelle, 1 & Bonus made 1st missed 2nd	4-5	80.0% 15-19 78.9%
4 0:08		Foul on Moore, Mioshi	2	4
4 0:02	*37-47			



Marshall County

Player	Player	Player
23 - Cadwell, R 0 / 4 0.0%	44 - Walker, Kr 1 / 6 16.6%	
40 - Swift, Dar 0 / 2 0.0%		
31 - Gossum, S. 6 / 11 54.5%		
22 - Sells, Ali 0 / 1 0.0%		
24 - Johnston, 0 / 1 0.0%		
Layups 1-9 Ft 10-15 Ft Over 15 Ft 3 Pointers Total		
4 / 4 2 / 13 1 / 6 0 / 2 7 / 25		
100.0% 15.4% 16.7% 0.0% 28.0%		



Southern

Player	Player	Player
24 - Harrison, 2 / 4 50.0%	05 - Andres, Ki 0 / 1 0.0%	
50 - Collins, C 2 / 7 28.5%		
55 - Moore, Mio 2 / 4 50.0%		
21 - Woods, Tin 0 / 3 0.0%		
04 - Burden, Mic 1 / 2 50.0%		
Layups 1-9 Ft 10-15 Ft Over 15 Ft 3 Pointers Total		
3 / 4 3 / 6 0 / 2 1 / 7 0 / 2 7 / 21		
75.0% 50.0% 0.0% 14.3% 0.0% 33.3%		

Southern "Lady Trojans" vs Marshall County "Lady Marshals"
1st Half Play by Play

PAGE : 1

Tip off at 9:00 p.m. on 03/23/88 at State Tourney, Frankfort
Produced by the K.H.S.A.A. Stat Crew with FINRL III**

Player	Team	Marshall County
Cadwell, Rach.	Swift, Darlene	Gossum, S., Sells, Alicia, Johnston, Jenny
1-1	100%	1-1 100% Driving Layup by Gossum, S. Assist by Swift, Darlene
1	1	Foul on Swift, Darlene
2-4	50.0%	2-6 33.3% Follow Layup by Gossum, S.
1-1	100%	1-1 100% Gossum, S., 1 Free Throw made
3-5	60.0%	3-7 42.8% 8 ft Right Base Line Turnaround by Gossum, S. Assist by Johnston, Jenny
1	2	
Sub In: Walker, Kristi Out: Cadwell, Rach.		
4-7	57.1%	4-10 40.0% 4 ft Lane Bank by Gossum, S.
1	2	Foul on Gossum, S.
1	3	Foul on Johnston, Jenny Sub In: Cadwell, Rach. Out: Johnston, Jenny
5-8	62.5%	5-14 35.7% Follow Layup by Gossum, S.
6-9	66.6%	6-15 40.0% Driving Layup by Gossum, S. Foul on Gossum, S.
2	4	

Time	Score	Southern	Player	Team
1 7:13	*2-0	Harrison, Lisa, Collins, Cindy, Moore, Mioshi, Woods, Tina, Burden, Michelle		
		Ball to Lady Trojans		
1 6:52		Foul on Harrison, Lisa	1	1
1 6:22				
1 6:22	2-2*	Harrison, Lisa, 2 Free Throws made both	2-2	100% 2-2 100%
1 6:07	2-4*	Layup Off Fast Break by Collins, Cindy	1-1	100% 1-3 33.3%
1 5:34	*4-4			
1 5:33		Foul on Moore, Mioshi	1	2
1 5:33	*5-4			
1 5:09	5-6*	8 ft Right Base Line Turnaround by Moore, Mioshi	1-2	50.0% 2-5 40.0%
1 4:56	*7-6			
1 4:39	7-8*	Follow Layup by Collins, Cindy	2-3	66.6% 3-7 42.8%
1 4:06		Foul on Harrison, Lisa	2	3
1 4:06				
1 3:52	7-10*	Follow Layup by Harrison, Lisa	1-2	50.0% 4-9 44.4%
1 3:40	*9-10			
1 3:24	9-12*	15 ft Right Base Line Jump shot by Harrison, Lisa Assist by Burden, Michelle	2-3	66.6% 5-10 50.0%
1 2:54			1	1
1 2:54	9-13*	Moore, Mioshi, 2 Free Throws made 1st missed 2nd	1-2	50.0% 3-4 75.0%
1 2:10				
1 2:08				
1 2:08	9-14*	Burden, Michelle, 1 Free Throw made	1-1	100% 4-5 80.0%
1 2:04	9-15*	Burden, Michelle, 1 Free Throw made	2-2	100% 5-6 83.3%
1 1:50	9-17*	4 ft Lane Bank by Moore, Mioshi Assist by Woods, Tina	2-4	50.0% 6-11 54.5%
1 1:08	*11-17		1	2
1 0:25	*13-17			
1 0:01				

Southern "Lady Trojans" vs Marshall County "Lady Marshals"
1st Half Play by Play

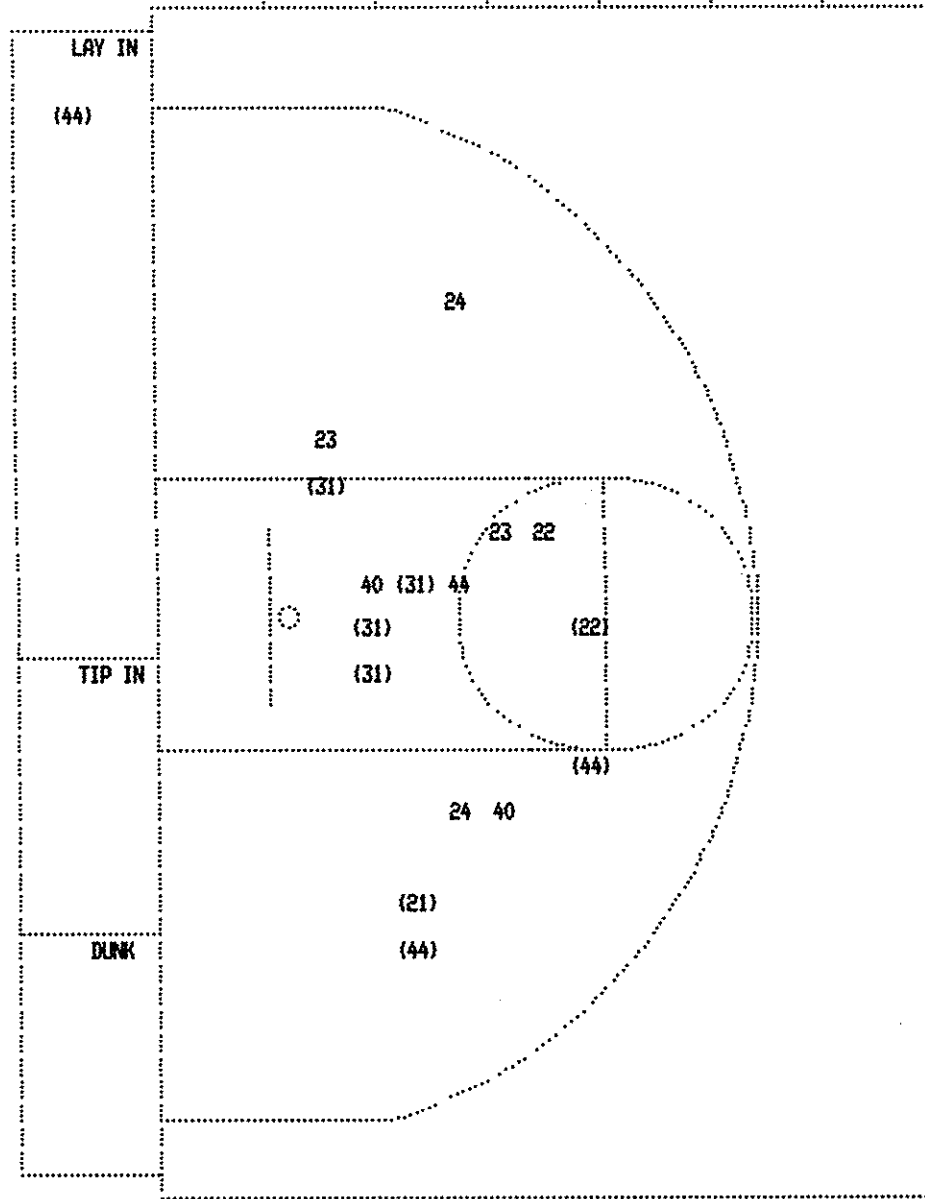
PAGE : 2

Tip off at 9:00 p.m. on 03/23/88 at State Tourney, Frankfort
Produced by the K.H.S.A.A. Stat Crew with FINRL III**

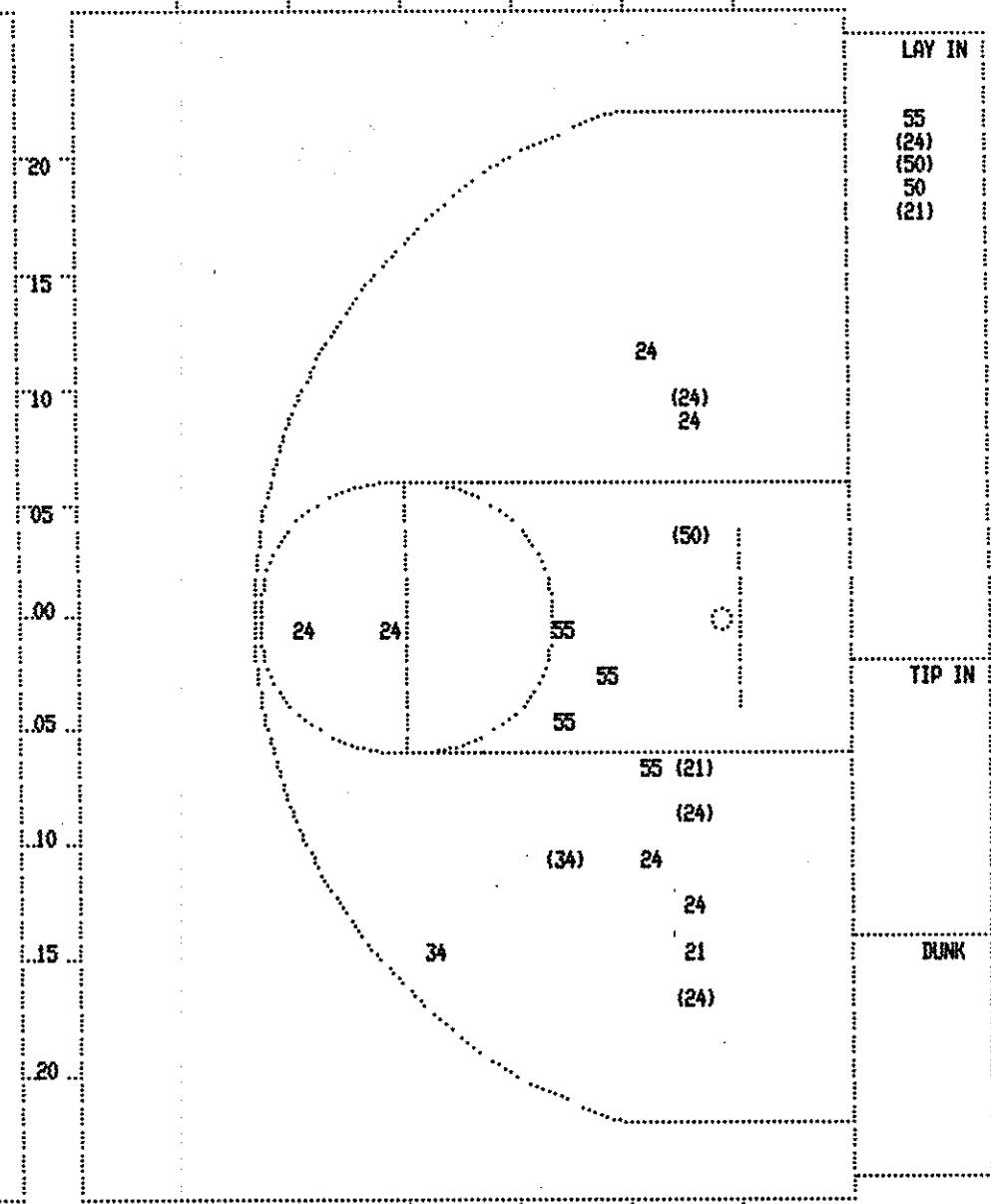
Player	Team	Marshall County
Cadwell, Rach.	Swift, Darlene	Gossum, S., Sells, Alicia, Walker, Kristi
1-2	50.0%	7-16 43.7% 14 ft Left Base Line Jump shot by Walker, Kristi Assist by Sells, Alicia
1	3	
2-2	100%	3-3 100% Cadwell, Rach., 2 Free Throws made both Foul on Walker, Kristi
1	5	
1	6	Foul on Sells, Alicia
REB: 15 A: 3 BLK: 0 TO: 5 PF: 6 S: 1 FT: 3-3 100% FG: 7-23 30.4% No. 1 Marshall County		
Sub In: Johnston, Jenny Out: Walker, Kristi		
2	7	Foul on Johnston, Jenny
Sub In: Walker, Kristi Out: Cadwell, Rach.		
Sub In: Watkins, Tammy Out: Johnston, Jenny		
Sub In: Cadwell, Rach. Out: Watkins, Tammy		
1-2	50.0%	4-5 80.0% Sells, Alicia, 2 Free Throws missed 1st made 2nd Sub In: Johnston, Jenny Out: Sells, Alicia

Time	Score	Southern	Player	Team
2 7:49	*15-17	Harrison, Lisa, Collins, Cindy, Moore, Mioshi, Woods, Tina, Burden, Michelle		
2 6:29		Foul on Harrison, Lisa	3	4
2 6:29	*17-17			
2 6:24				
2 6:24	17-19*	Harrison, Lisa, 2 Free Throws made both	4-4	100% 7-8 87.5%
2 6:24		Sub In: Grant, Steph. Out: Harrison, Lisa		
2 4:52	17-21*	5 ft Left Side Bank by Burden, Michelle Assist by Woods, Tina	1-1	100% 7-18 38.8%
2 4:51			2	3
2 4:51	17-22*	Burden, Michelle, 1 Free Throw made	3-3	100% 8-9 88.8%
2 4:01				
2 4:01				
2 2:33				
2 2:33				
2 2:33				
2 2:33				
2 1:55				
2 1:55				
2 1:55	*18-22	Sub In: Andres, Kim Out: Woods, Tina Grant, Steph., 1 & Bonus missed 1st Foul on Burden, Michelle	0-1	00.0% 8-10 80.0%
2 1:55			1	5

SECOND HALF SHOT CHART Produced by the K.H.S.A.A. Stat Crew with FINAL III™



Marshall County				Player			
23 - Cadwell, R	0 / 2	0.0%	21 - Brien, Jen	1 / 1	100.0%		
40 - Swift, Dar	0 / 2	0.0%	44 - Walker, Kr	3 / 4	75.0%		
31 - Gossam, S.	4 / 4	100.0%					
22 - Sells, Ali	1 / 2	50.0%					
24 - Johnston,	0 / 2	0.0%					
Layups	1-9 Ft	10-15 Ft	Over 15 Ft	3 Pointers	Total		
1 / 1	4 / 8	4 / 8			9 / 17		
100.0%	50.0%	50.0%			52.9%		



Southern				Player			
24 - Harrison,	4 / 10	40.0%					
50 - Collins, C	2 / 3	66.6%					
55 - Moore, Mic	0 / 5	0.0%					
21 - Woods, Tin	2 / 3	66.6%					
34 - Grant, Ste	1 / 2	50.0%					
Layups	1-9 Ft	10-15 Ft	Over 15 Ft	3 Pointers	Total		
3 / 5	3 / 7	2 / 8	1 / 3		9 / 23		
60.0%	42.9%	25.0%	33.3%		39.1%		

BOX SCORE: * OFFICIAL FIRST HALF * Date: 03-23-88 Site: State Tourney, Frankfort Attendance: 3,625
 Team: Southern

NO.	NAME	TOTAL FG		3-POINT		FT	FTA	REB			PF	TP	A	TO	BLK	S	MIN
		FG	FGA	FG	FGA			O	D	T							
24	Harrison, Lisa	2	4	0	0	4	4	2	1	3	3	8	0	1	0	2	18
50	Collins, Cindy	2	7	0	0	0	0	2	5	7	0	4	0	3	0	0	24
55	Moore, Mioshi	2	4	0	0	1	2	0	2	2	1	5	0	0	0	0	24
21	Woods, Tina	0	3	0	0	0	0	2	1	3	0	0	2	1	0	1	21
04	Burden, Michelle	1	2	0	1	3	3	0	0	0	1	5	1	1	0	0	24
34	Grant, Steph.	0	0	0	0	0	1	0	0	0	0	0	0	1	0	2	6
05	Andres, Kim	0	1	0	1	0	0	0	0	0	0	0	0	0	0	0	3
TEAM								1		1							
TOTALS		7	21	0	2	8	10	7	9	16	5	22	3	7	0	5	120
Percentages:		HALF-----		FG		7/ 21	33.3%	3-PT.		0/ 2	0.0%	FT		8/ 10	80.0%		
		Period 1		6/ 13		46.2%			0/ 0	0.0%			5/ 6	83.3%			
		Period 3		1/ 8		12.5%			0/ 2	0.0%			3/ 4	75.0%			

Team: Marshall County

NO.	NAME	TOTAL FG		3-POINT		FT	FTA	REB			PF	TP	A	TO	BLK	S	MIN
		FG	FGA	FG	FGA			O	D	T							
23	Cadwell, Rach.	0	4	0	0	2	2	2	4	6	0	2	0	0	0	1	21
40	Swift, Darlene	0	2	0	0	0	0	3	2	5	1	0	1	1	0	0	24
31	Gossum, S.	6	11	0	0	1	1	3	2	5	2	13	0	1	0	0	24
22	Sells, Alicia	0	1	0	0	1	2	0	0	0	1	1	1	3	0	1	22
24	Johnston, Jenny	0	1	0	0	0	0	0	0	0	2	0	1	0	0	0	19
44	Walker, Kristi	1	6	0	0	0	0	0	1	1	1	2	0	3	0	0	10
14	Morgan, Holly	0	0	0	0	0	0	0	1	1	0	0	0	0	0	0	0
TEAM																	
TOTALS		7	25	0	0	4	5	8	10	18	7	18	3	8	0	2	120
Percentages:		HALF-----		FG		7/ 25	28.0%	3-PT.		0/ 0	0.0%	FT		4/ 5	80.0%		
		Period 1		6/ 15		40.0%			0/ 0	0.0%			1/ 1	100.0%			
		Period 2		1/ 10		10.0%			0/ 0	0.0%			3/ 4	75.0%			

OFFICIALS: Jackie Cupp, Lois Holmes, Alt.-D. Percell
 Technicals: None

SCORE BY PERIODS			
Southern	17	5	= 22
Marshall County	13	5	= 18

Produced by the K.H.S.A.A. Stat Crew with FINAL III™